



**4 Bed
House - Terraced
located in**

£2,395 Per Month



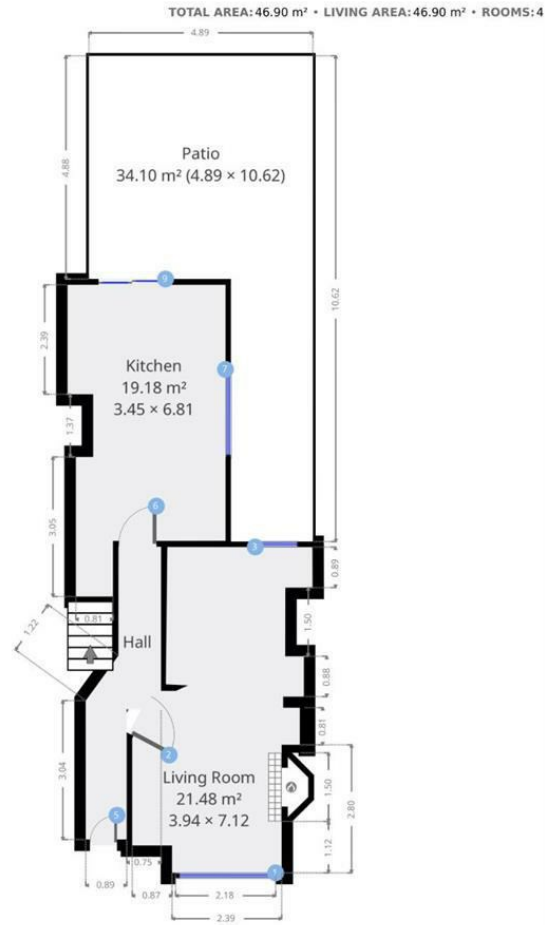
 **BISHOP
SURELETS**

Maldon Rd

TOTAL AREA: 113.58 m² • LIVING AREA: 106.94 m² • FLOORS: 3 • ROOMS: 6



▼ **Ground Floor**



THIS FLOORPLAN IS BISHOP SULLIVAN'S PROPERTY AND WE DO NOT GIVE PERMISSION FOR ANY THIRD PARTY USE. SHOULD ANY THIRD PARTY CHOOSE TO USE OUR FLOORPLAN THEY AGREE TO BEING LIABLE FOR A £100.00 INC VAT FEE TO BISHOP SULLIVAN, TO BE PAID WITHIN 14 DAYS OF RECEIPT OF INVOICE.



THIS FLOORPLAN IS PROVIDED WITHOUT WARRANTY OF ANY KIND. SENSOPIA DISCLAIMS ANY WARRANTY INCLUDING, WITHOUT LIMITATION, SATISFACTORY QUALITY OR ACCURACY OF DIMENSIONS.

Energy Efficiency Rating		
	Current	Potential
Very energy efficient - lower running costs		
(92 plus) A		
(81-91) B		
(69-80) C		
(55-68) D	65	68
(39-54) E		
(21-38) F		
(1-20) G		
Not energy efficient - higher running costs		
EU Directive 2002/91/EC		
England & Wales		

DIRECTIONS

CONTACT

Office 280, Regency House
91 Western Road
Brighton
East Sussex
BN1 2RN

E: lettings@bishopsurelets.co.uk
T: 01273 646 426
www.bishopsurelets.co.uk

